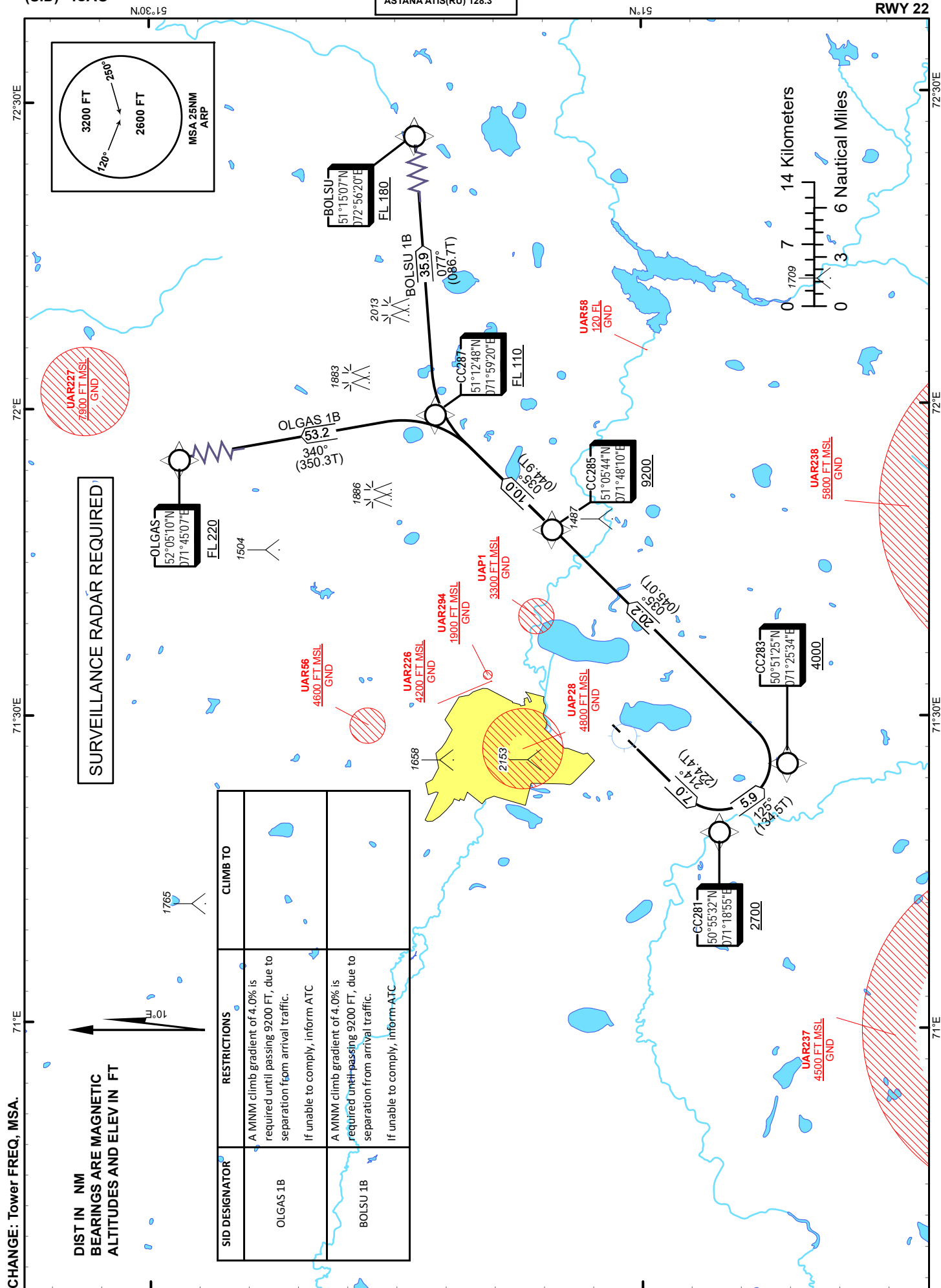


ASTANA
NURSULTAN NAZARBAYEV
INTERNATIONAL AIRPORT
RWY 22



TABULAR DESCRIPTION

BOLSU 1B RWY22											
Serial Number	Path Descriptor	Waypoint Identifier	Fly - over	Course °M(°T)	Magnetic Variation(°)	Distance NM	Turn Direction	Altitude FT	Speed KT	VPA (°)	Navigation Specification
10	CF	CC281	-	214(224.4)	10	7	-	+2700		2.5	RNAV1
20	TF	CC283	-	125(134.5)	10	5.9	L	+4000		2.5	RNAV1
30	TF	CC285	-	35(45)	10	20.2	L	+9200	-250	2.5	RNAV1
40	TF	CC287	-	35(44.9)	10	10	-	+FL110		1.9	RNAV1
50	TF	BOLSU	-	77(86.7)	10	35.9	R	+FL180		1.9	RNAV1

WAYPOINT LIST

BOLSU 1B		
Waypoint Identifier	Coordinates	
DER	510031.69N	0712641.10E
CC281	505532.44N	0711855.42E
CC283	505124.63N	0712534.27E
CC285	510543.68N	0714809.57E
CC287	511248.18N	0715919.74E
BOLSU	511507.00N	0725620.00E

TABULAR DESCRIPTION

OLGAS 1B RWY22											
Serial Number	Path Descriptor	Waypoint Identifier	Fly - over	Course °M(°T)	Magnetic Variation(°)	Distance NM	Turn Direction	Altitude FT	Speed KT	VPA (°)	Navigation Specification
10	CF	CC281	-	214(224.4)	10	7	-	+2700		2.5	RNAV1
20	TF	CC283	-	125(134.5)	10	5.9	L	+4000		2.5	RNAV1
30	TF	CC285	-	35(45)	10	20.2	L	+9200	-250	2.5	RNAV1
40	TF	CC287	-	35(44.9)	10	10	-	+FL110		1.9	RNAV1
50	TF	OLGAS	-	340(350.3)	10	53.2	L	+FL220		1.9	RNAV1

WAYPOINT LIST

OLGAS 1B		
Waypoint Identifier	Coordinates	
DER	510031.69N	0712641.10E
CC281	505532.44N	0711855.42E
CC283	505124.63N	0712534.27E
CC285	510543.68N	0714809.57E
CC287	511248.18N	0715919.74E
OLGAS	520510.00N	0714507.00E